

BASIC DETAILS

41568--PRAYAAG INTL SCHOOL NH-1 GT ROAD PANIPAT HRY

Dated : 08/04/2021

SCHOOL NAME	PRAYAAG INTL SCHOOL NH-1 GT ROAD PANIPAT HRY	SCHOOL CODE	41568
ADDRESS	PRAYAAG INTERNATIONAL SCHOOL ,OPP.NEW POLICE LINES,NH-1 G.T.ROAD ,PANIPAT	AFFILIATION CODE	531592
PRINCIPAL	MS ANJU GUPTA	PRINCIPAL'S CONTACT NUMBER	9992244212
PRINCIPAL'S EMAIL ID	principal@pisp.in	PRINCIPAL'S RETIREMENT DATE	31/07/2025
SCHOOL'S CONTACT NUMBER	0180-2565555	SCHOOL'S EMAIL ID	mailus@pisp.in
SCHOOL'S WEBSITE	http://prayaaginternationalschool.com	SCHOOL'S FAX NUMBER	01802575555
LANDMARK NEAR SCHOOL	OPP. NEW POLICE LINES	YEAR OF ESTABLISHMENT	2016
AFFILIATION VALIDITY	2020 TO 2023	AFFILIATION STATUS	REGULAR
NAME OF THE TRUST/SOCIETY/COMPANY REGISTERED WITH	VIDHATA EDUCATIONAL AND WELFARE TRUST	REGISTRATION DATE	12/03/2020
SOCIETY REGISTRATION NUMBER	IN-DL34818964063790S	REGISTRATION VALIDITY	PERMANENT REGISTRATION
NOC ISSUING AUTHORITY	DIRECTORATE OF ELEMENTARY EDUCATION, HARYANA	NOC ISSUING DATE	13/10/2017
NO OBJECTION CERTIFICATE	VIEW (PdfHandler.aspx? FileName=noc/41568.PDF)	NON PROPRIETARY CHARACTER AFFIDAVIT/NON PROFIT COMPANY AFFIDAVIT	VIEW (PdfHandler.aspx? FileName=affidavit/41568.PD

WHETHER SCHOOL IS RUNNING MORNING/ EVENING/ DOUBLE SHIFT?	Morning	CURRENTLY RUNNING CLASSES FROM	1
WHETHER OFFERED VOCATIONAL/SKILL SUBJECTS?	No	EXAMINATION CENTER NUMBER, IF ANY	0

FACULTY DETAILS

41568--PRAYAAG INTL SCHOOL NH-1 GT ROAD PANIPAT HRY

Dated : 12/10/2020

TOTAL NUMBER OF TEACHERS (ALL CLASSES)	59	NUMBER OF PGTs	12
NUMBER OF TGTs	20	NUMBER OF PRTs	17
NUMBER OF PETs	2	OTHER NON-TEACHING STAFF	10
NUMBER OF MANDATORY TRAINING QUALIFIED TEACHERS	51	NUMBER OF TRAININGS ATTENDED BY FACULTY SINCE LAST YEAR	59
WHETHER SPECIAL EDUCATOR APPOINTED?	YES	WHETHER COUNSELLOR AND WELLNESS TEACHER APPOINTED?	YES
HAS MANDATORY TRAINING OF TEACHERS AS PER THE TRAINING POLICY (SECTION-16 OF AFFILIATION BYE-LAWS) (http://cbseaff.nic.in/cbse_aff/attachment/onlineservices/affiliation-Bye-Laws.pdf) BEEN COMPLETED?	YES	NUMBER OF NTTs	8

STUDENT DETAILS

41568--PRAYAAG INTL SCHOOL NH-1 GT ROAD PANIPAT HRY

Dated : 12/10/2020

CLASS	TOTAL NUMBER OF SECTIONS	TOTAL PER CLASS INTAKE	TOTAL NUMBER OF STUDENTS
1	3	75	65
2	4	100	88
3	3	90	85
4	4	100	92
5	3	105	76
6	3	105	79
7	4	140	110
8	4	140	111
9	3	105	89
10	2	70	64
11	3	105	51
12	0	0	0

ACADEMIC DETAILS

41568--PRAYAAG INTL SCHOOL NH-1 GT ROAD PANIPAT HRY

Dated : 28/05/2021

SUBJECTS OFFERED FOR CLASS 10	SUBJECTS OFFERED FOR CLASS 12
086---SCIENCE 165---COMPUTER APPLICATIONS 241---MATHEMATICS BASIC 002---HINDI COURSE-A 041---MATHEMATICS 087---SOCIAL SCIENCE 184---ENGLISH LANG & LIT.	Hindi, English , Physics, Chemistry, Biology, Math, Business Studies, Accountancy, Economics, History, Political Science, Geography, Psychology, Physical - Education, Music, Computer Science Informaics Practices and Painting

INFRASTRUCTURE DETAILS

41568--PRAYAAG INTL SCHOOL NH-1 GT ROAD PANIPAT HRY

Dated : 09/04/2021

TOTAL NUMBER OF SITES OF SCHOOL	1	TOTAL NUMBER OF BUILDING BLOCKS	1
TOTAL AREA OF SCHOOL IN SQUARE METRES	27973	TOTAL NUMBER OF PLAYGROUNDS	2
TOTAL AREA OF PLAYGROUND IN SQUARE METRES	6730	TOTAL NUMBER OF ROOMS	115
TOTAL NUMBER OF SMALL-SIZED ROOMS	2	TOTAL NUMBER OF MEDIUM-SIZED ROOMS	6
TOTAL NUMBER OF LARGE-SIZED ROOMS	107	TOTAL NUMBER OF MALE REST ROOM	1
TOTAL NUMBER OF FEMALE REST ROOM	2	NUMBER OF GIRLS TOILET	38
NUMBER OF BOYS TOILET	53	NUMBER OF TOILETS FOR DIFFERENTLY ABLED PERSONS	5
NUMBER OF WASHROOMS FOR FEMALE STAFF	10	NUMBER OF WASHROOMS FOR MALE STAFF	10
TOTAL NUMBER OF LIBRARIES	2	NUMBER OF LABORATORIES	5
TOTAL NUMBER OF STUDENT CANTEENS	1	TOTAL NUMBER OF STAFF CANTEENS	0
NUMBER OF WATER PURIFIERS/ROs	2	NUMBER OF AUDITORIUMS	1
NUMBER OF LIFTS/ELEVATORS	1	NUMBER OF DIGITAL CLASSROOMS	41

DOES THE SCHOOL HAVE HOSTEL FACILITY	NO	DOES THE SCHOOL HAVE GUARDS EMPLOYED FOR SAFETY	YES
DOES THE SCHOOL HAVE FIRE EXTINGUISHERS	YES	DOES THE SCHOOL HAVE SPRINKLERS	YES
DOES THE SCHOOL HAVE CCTV CAMERAS INSTALLED?	YES	IS THE SCHOOL EXAMINATION CENTER OF CBSE?	NO
TOTAL NUMBER OF COMPUTERS IN ALL COMPUTER LAB	108	DOES THE SCHOOL HAVE WEB SERVERS	YES
DOES THE SCHOOL HAVE A BOUNDARY WALL?	YES	IS YOUR SCHOOL BARRIER FREE/ HAS RAMPS?	YES
DOES THE SCHOOL HAVE CLINIC FACILITY?	YES	DOES THE SCHOOL HAVE A STRONG ROOM?	YES
DOES THE SCHOOL HAVE A GYMNASIUM?	YES	IS YOUR SCHOOL WI-FI ENABLED?	YES
PROVISION OF WEB BASED LEARNING PROGRAMS?	YES	DOES THE SCHOOL HAVE FIRE ALARMS?	YES
DOES THE SCHOOL HAVE SPORTS FACILITY?	YES	DOES THE SCHOOL HAVE INDOOR GAMES FACILITY?	YES
DOES THE SCHOOL HAVE A SWIMMING POOL?	YES	DOES THE SCHOOL HAVE DANCE/MUSIC FACILITY?	YES
TOTAL NUMBER OF BUSES OWNED	15	TOTAL NUMBER OF BUSES HIRED	0
TOTAL NUMBER OF VANS/MATADORS	17	TOTAL NUMBER OF DRIVERS	34

NUMBER OF FEMALE ATTENDANTS FOR BUS DUTY	32	NUMBER OF ACTIVITY ROOMS	1
NAME OF TRANSPORT COORDINATOR	KAMAL KISHORE	TRANSPORT COORDINATOR CONTACT	8295800338
BUILDING SAFETY CERTIFICATE	VIEW (PdfHandler.aspx? FileName=building/41568.PDF)	TRANSPORT SAFETY CERTIFICATE	VIEW (PdfHandler.aspx? FileName=transport/41568.PDF)
ARE THE HEALTH AND HYGIENE, TOILETS ON ALL FLOORS, SEPARATE TOILETS FOR STAFF, RAMPS, SIGNBOARDS, ETC. BEING MAINTAINED PROPERLY?	YES	IS THE SCHOOL INFRASTRUCTURE BEING USED FOR ANY COMMERCIAL ACTIVITY?	NO

OTHER DETAILS

TOTAL BOOKS AVAILABLE IN THE SCHOOL LIBRARY	8200	PERIODICALS IN THE SCHOOL LIBRARY	8
DAILIES IN THE SCHOOL LIBRARY	6	REFERENCE BOOKS IN THE SCHOOL LIBRARY	3000
LIBRARY RESOURCES	5	DOES IT HAVE LIBRARY SOFTWARE	No
LIBRARY SIZE (IN SQ. METERS)	148.83	COMPUTER LAB SIZE (IN SQ. METERS)	55.676
COMPOSITE SCIENCE LAB SIZE (IN SQ. METERS)	0	CHEMISTRY LAB SIZE (IN SQ. METERS)	91.026
PHYSICS LAB SIZE (IN SQ. METERS)	91.026	HOW MANY ROOMS BETWEEN 400 to 500 SQ FT	45

DOES IT HAVE LIBRARY INTERNET	YES	TOTAL NUMBER OF LABORATORY	5
WHETHER SCHOOL HAS SINGLE CONTIGUOUS PLOT ?	Yes	SCHOOL SITE (TEMPORARY / PERMANENT)	PERMANENT
DISTANCE BETWEEN TWO SITES OF THE SCHOOL	0	PURPOSE FOR TWO SITES OF THE SCHOOL	na
BIOLOGY LAB SIZE (IN SQ. METERS)	91.026	MATHEMATICS LAB SIZE (IN SQ. METERS)	54.68
CERTIFYING THAT NO OTHER INSTITUTION (APART FROM SCHOOL) IS RUNNING IN THE CLAIMED LAND AREA	Yes	THE SCHOOL WILL NOT RUN ANY BRANCH IN THE PREVIOUS PLOT WITH SAME AFFILIATION NO	No
HOW MANY ROOMS LESS THAN 400 SQ FT	0	HOW MANY ROOMS GREATER THAN 500 SQ FT	30

LOCATION DETAILS

41568--PRAYAAG INTL SCHOOL NH-1 GT ROAD PANIPAT HRY

Dated : 07/10/2020

NEAREST NATIONALISED BANK	PUNJAB NATIONAL BANK, SIWAH	DISTANCE OF BANK FROM SCHOOL IN KM	3
NEAREST BUS STATION	PANIPAT	DISTANCE OF BUS TERMINAL FROM SCHOOL IN KM	12
NEAREST RAILWAY STATION	DIWANA RAILWAY STATION	DISTANCE OF RAILWAY STATION FROM SCHOOL IN KM	1
NEAREST AIRPORT	SAFDARJANG AIRPORT, DELHI	DISTANCE OF AIRPORT FROM SCHOOL IN KM	106
NEAREST HOSPITAL	AYUSHMAN BHAV HEALTH INSTITUTE	DISTANCE OF HOSPITAL FROM SCHOOL IN KM	2
NEAREST POLICE STATION	CHANDNI BAGH POLICE STATION	DISTANCE OF POLICE STATION FROM SCHOOL IN KM	9
NEAREST METRO STATION		DISTANCE OF METRO FROM SCHOOL IN KM	

CONTRIBUTION TOWARDS ENVIRONMENT PROTECTIONPRAYAG INTERNATIONALSCHOOL PANIPAT HARYANA
Dated : 12/10/2020

WHETHER RAIN WATER HARVESTING HAS BEEN DONE IN THE CAMPUS?	YES	WHETHER ROOF WATER HARVESTING IS BEING UNDERTAKEN BY THE SCHOOL?	YES
WHETHER HARVESTED WATER IS RECYCLED FOR GARDENING, ETC?	YES	WHETHER SCHOOL ENSURES MAINTENANCE OF ALL WATER FAUCETS/PIPES ETC TO PREVENT ANY LEAKAGES?	YES
WHETHER SEGREGATION OF WASTE IS DONE AT SOURCE?	YES	WHETHER ORGANIC WASTE IS BEING RECYCLED?	YES
WHETHER WASTE PAPER IS RECYCLED?	YES	WHETHER SCHOOL IS MAKING EFFORTS TO REDUCE USE OF PAPER BY ADOPTING IT SOLUTIONS?	YES
WHETHER THERE IS PROPER DISPOSAL OF SOLID WASTE?	YES	WHETHER THERE IS A SYSTEM FOR DISPOSAL OF ELECTRONIC WASTE?	NO
WHETHER SCHOOL IS USING ENERGY SAVING AND ENERGY EFFICIENT ELECTRICAL EQUIPMENT?	YES	WHETHER PLANTATION/GARDENING HAS BEEN DONE IN AND AROUND CAMPUS?	YES
WHETHER DRIP IRRIGATION IS THE ONLY MEANS OF WATERING THE GARDEN?	NO	WHETHER SCHOOL IS USING SOLAR ENERGY?	NO
WHETHER WASTE WATER FROM RO PLANT FOR DRINKING WATER IS BEING HARVESTED/RECYCLED?	YES	WHETHER SCHOOL IS PROMOTING AWARENESS AMONGST CHILDREN AND PARENTS ON ENVIRONMENTAL CONSERVATION AND CLEANLINESS?	YES
WHETHER CHILDREN ARE BEING TAUGHT HOW TO AUDIT THE USE OF WATER AND WHETHER THEY ARE BEING ENCOURAGED TO TAKE IT UP AT HOME?	YES	WHETHER CHILDREN ARE TAKING UP WATER AUDITING AT SCHOOL?	YES
WHETHER ENVIRONMENTAL LITERACY IS PROMOTED THROUGH INTEGRATION IN ACADEMICS?	YES	WHETHER TREES HAVE BEEN PLANTED BY STUDENTS, IN SCHOOL AT HOME/IN NEIGHBOURHOOD IN THE CURRENT ACADEMIC YEAR?	YES
WHETHER CONSERVATION OF ENVIRONMENT IS PROMOTED?	YES	TOTAL TREES PLANTED? (BY STUDENTS AND TEACHERS)	213
TOTAL AMOUNT OF WATER CONSERVED (IN LITRES)? (BY STUDENTS AND TEACHERS)	953	TARGET DATE FOR STOPPING USE OF POLYTHENE	03/01/2022

CHAIRMAN/PRESIDENT'S CORRESPONDENT DETAILS AND SMC41508 PPMIIG INTL SCHOOL NH-1 GT ROAD PANIPAT HRY
Dated : 09/04/2021

CHAIRMAN/PRESIDENT'S/ CORRESPONDENT NAME	Mr C K Sharma	CHAIRMAN/PRESIDENT'S/ CORRESPONDENT ADDRESS	S-7 Dhruv Appartment Sec -13 Rohini , Delhi 110085
CHAIRMAN/PRESIDENT'S/ CORRESPONDENT PHONE (OFFICE)	01802565555	CHAIRMAN/PRESIDENT'S/ CORRESPONDENT PHONE (RESIDENCE)	9313602233
SECRETARY NAME	Ms Anju Gupta	TOTAL MEMBERS	11
WHETHER THE SCHOOL MANAGING COMMITTEE HAS BEEN CONSTITUTED AS PER OF REQUIREMENTS OF AFFILIATION BYE- LAWS?	Yes		

SCHOOL WEBSITE INFORMATION

41568--PRAYAAG INTL SCHOOL NH-1 GT ROAD PANIPAT HRY

Dated : 10/04/2021

URL OF SCHOOL WEBSITE	http://prayaaginternationalschool.com/	DETAILS OF CURRICULUM	Yes
SCHOOL MANAGING COMMITTEE INFORMATION	Yes	TRANSFER CERTIFICATE SAMPLE	Yes
NORMS FOLLOWED FOR FIXING FEE	Yes	SELF AFFIDAVIT OF SCHOOL	Yes
AFFILIATION STATUS (MIDDLE/SECONDARY/SENIOR SECONDARY)	Yes	DETAILS OF INFRASTRUCTURE	Yes
DETAILS OF TEACHERS INCLUDING QUALIFICATIONS	Yes	DETAILS OF TEACHERS TRAINING	Yes
THE NUMBER OF STUDENTS CLASS WISE	Yes	LIST OF BOOKS PRESCRIBED IN VARIOUS CLASSES	Yes
ANNUAL REPORT	No	SCHOOL CIRCULARS	Yes
POSTAL ADDRESS AND E-MAIL, TELEPHONE NOS. OF SCHOOL AND AUTHORITIES	Yes	AS PER THE SECTION (2.4.9) OF AFFILIATION BYE-LAWS, INFORMATION WITH REGARD TO FEES CHARGED FOR EACH CLASS	Yes
PERIOD OF AFFILIATION	Yes	ACADEMIC CALENDAR OF THE SCHOOL	Yes
AS PER THE SECTION (2.4.7 (B)) OF AFFILIATION BYE-LAWS, WRITTEN DECLARATION DULY SIGNED BY THE MANAGER AND THE PRINCIPAL TO THE EFFECT THAT THEY HAVE GONE THROUGH THE CONTENTS OF THE BOOKS PRESCRIBED BY THE SCHOOL AND OWN THE RESPONSIBILITY			Yes
ACADEMIC ACHIEVEMENTS; WRITE UP ON ALL EFFORTS MADE IN THE FIELD OF ENVIRONMENT EDUCATION, SPORTS ACHIEVEMENTS, INNOVATIONS, OVERALL RESULTS, PTA ACTIVITIES, IMPORTANT SMC DECISIONS BEEN ADDED IN ANNUAL REPORT OF THE SCHOOL			Yes

OTHER VITAL INFORMATION

41568--PRAYAAG INTL SCHOOL NH-1 GT ROAD PANIPAT HRY

Dated : 09/04/2021

10th BOARD PASS PERCENTAGE (2014/2015/2016)	100/0/0	12th BOARD PASS PERCENTAGE (2014/2015/2016)	0/0/0
NAME OF WELLNESS/ACTIVITY TEACHER	YES	NAME OF GRIEVANCE/COMPLAINT REDRESSAL OFFICER	MS ANJU GUPTA
CONTACT NUMBER OF GRIEVANCE/COMPLAINT REDRESSAL OFFICER	8295800335	EMAIL ID OF GRIEVANCE/COMPLAINT REDRESSAL OFFICER	mailus@pisp.in
NAME OF HEAD OF SEXUAL HARASSMENT COMMITTEE	MS ANJU GUPTA	CONTACT NUMBER OF HEAD OF SEXUAL HARASSMENT COMMITTEE	9992244212
EMAIL ID OF HEAD OF SEXUAL HARASSMENT COMMITTEE	principal@pisp.in	NAME OF CONTACT PERSON IN CASE OF EMERGENCY	ANJU GUPTA
CONTACT NUMBER OF CONTACT PERSON IN CASE OF EMERGENCY	9992244212	EMAIL ID OF CONTACT PERSON IN CASE OF EMERGENCY	principal@pisp.in
TOTAL NUMBER OF DOCTORS IN SCHOOL CLINIC	1	TOTAL NUMBER OF NURSES IN SCHOOL CLINIC	1
TOTAL NUMBER OF BEDS IN SCHOOL CLINIC	4	LEVEL OF INVOLVEMENT OF SCHOOL IN CBSE ACTIVITIES	ACTIVE
DO THE TEACHERS GET PROPER GRADE LIKE PGT/TGT AS PER THE CLASSES THEY ARE ENTITLED TO TEACH?	YES	DO THE TEACHERS AND STAFF GET THEIR SALARY WITHIN FIRST WEEK OF THE MONTH?	YES
DOES THE SCHOOL HAVE EPF FACILITY FOR STAFF	YES	EPF REGISTRATION NUMBER	HRKNL1780229000
MODE OF SALARY PAYMENT	bankpayment	NAME OF BANK WITH SALARY ACCOUNT	PUNJAB NATIONAL BANK, SEWAH,PANIPAT
ARE THE SCHOOL ACCOUNTS AUDITED REGULARLY?	YES	PARENT TEACHERS ASSOCIATION AS PER NORMS	YES

ACADEMIC SESSION	APRIL TO MARCH	VACATION PERIOD	MAY TO JUNE
AUDITED BALANCE SHEET OF SCHOOL	VIEW (PdfHandler.aspx? FileName=balance/41568.pdf)	STAFF STATEMENT OF SCHOOL	VIEW (PdfHandler.aspx? FileName=staff/41568.pdf)
INCOME AND EXPENDITURE STATEMENT	VIEW (PdfHandler.aspx? FileName=income/41568.pdf)	ACADEMIC CALENDAR OF SCHOOL	VIEW (PdfHandler.aspx? FileName=academic/41568.pdf)
AVAILABILITY OF STAFF WITH KNOWLEDGE OF SOFTWARE/SCANNING/GEO TAGGING/INTERNET?	YES	WHETHER SUFFICIENT GUARDS EMPLOYED FOR SAFETY?	YES

BEST PRACTICES OF SCHOOL

With the support of teachers each student will excel through their own hard work, perseverance and ambition, stretch their boundaries and learn more than they think possible.

OTHER INFORMATION

MANDATORY ART EDUCATION FROM CLASS 1 TO 10 -TWO PERIOD A DAY	YES	WHETHER SELECTION OF TEXTBOOKS NORMS ((SECTION-2.4.7 (A) OF AFFILIATION BYE-LAWS) (http://cbseaff.nic.in/cbse_aff/attachment/onlineservices/affiliation-Bye-Laws.pdf))?
WHETHER LIST OF PRESCRIBED BOOKS ARE PUBLISHED ON SCHOOL WEBSITE WITH WRITTEN DECLARATION AS PER (SECTION-2.4.7 (B) OF AFFILIATION BYE-LAWS) (http://cbseaff.nic.in/cbse_aff/attachment/onlineservices/affiliation-Bye-Laws.pdf)?	YES	WHETHER INFORMATION AS PER PARAGRAPH 2.4.7 (B) OF AFFILIATION BYE-LAWS) (http://cbseaff.nic.in/cbse_aff/attachment/onlineservices/affiliation-Bye-Laws.pdf) PUBLISHED ON THE SCHOOL WEBSITE?
WHETHER ALL GUIDELINES RELATED TO POCSO ACT COMPLIED WITH AS PER (SECTION-14.25 OF AFFILIATION BYE-LAWS) (http://cbseaff.nic.in/cbse_aff/attachment/onlineservices/affiliation-Bye-Laws.pdf)?	YES	WHETHER ANNUAL REPORT CONTAINS INFORMATION AS PER PARAGRAPH 14.5 OF AFFILIATION BYE-LAWS) (http://cbseaff.nic.in/cbse_aff/attachment/onlineservices/affiliation-Bye-Laws.pdf)?
WHETHER DISABLED STUDENTS FACILITATED AS PER (SECTION-14.15 OF AFFILIATION BYE-LAWS) (http://cbseaff.nic.in/cbse_aff/attachment/onlineservices/affiliation-Bye-Laws.pdf)?	YES	WHETHER IN-SERVICE TRAINING ORGANIZATION INFORMATION AS PER PARAGRAPH 14.15 OF AFFILIATION BYE-LAWS) (http://cbseaff.nic.in/cbse_aff/attachment/onlineservices/affiliation-Bye-Laws.pdf)?
WHETHER ANNUAL HEALTH CHECK-UP OF STUDENTS DONE AND THEIR RECORDS MAINTAINED ?	YES	NUMBER OF TEACHERS IN SCHOOL WITH SHIKSHA VANI

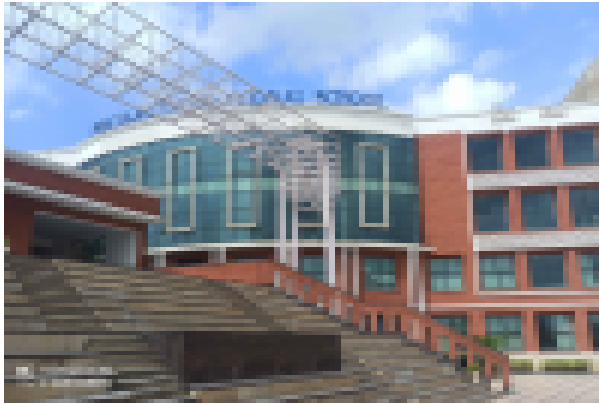
PHOTO OF SCHOOL

41568--PRAYAAG INTL SCHOOL NH-1 GT ROAD PANIPAT HRY

SCHOOL PHOTOS

Dated :

GEO-TAGGED PHOTO



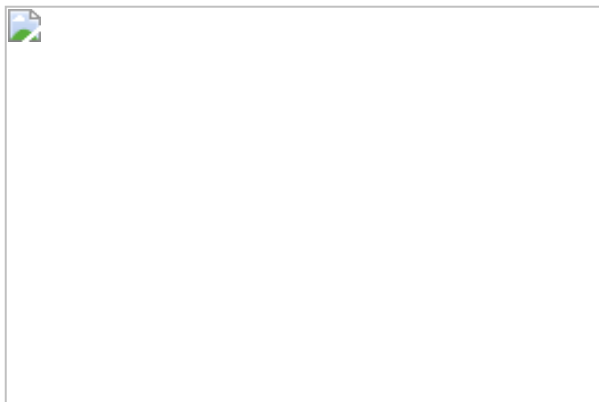
PLAYGROUND PHOTO



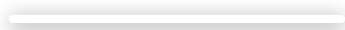
LIBRARY PHOTO



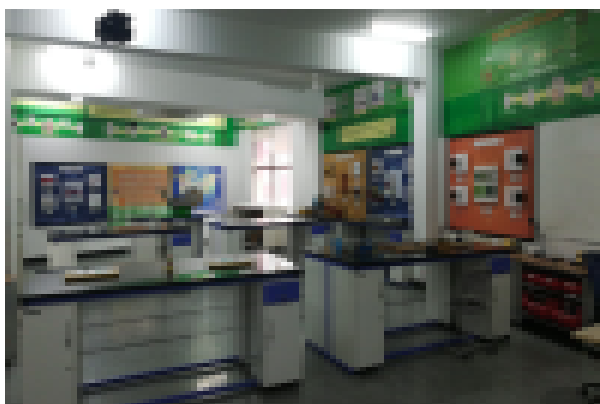
SCIENCE LAB PHOTO



VIDEO



PHYSICS LAB PHOTO



CHEMISTRY LAB PHOTO



BIOLOGY LAB PHOTO



TOILET PHOTO



ADDITIONAL INFORMATION

41568--PRAYAAG INTERNATIONALSCHOOL PANIPAT HARYANA

Dated : 12/10/2020
06070100805

U-DISE CODE

SCHOOL LOCATED IN RURAL OR URBAN AREA

RURAL

HABITATION NAME/MOHALLA

OPPOSITE NEW POLICE LINES

VILLAGE NAME (FOR RURAL)/WARD NUMBER (FOR URBAN)

SEWAH

VILLAGE PANCHAYAT NAME (FOR RURAL)

SEWAH

PIN CODE

132108

CLUSTER RESOURCE CENTER NAME

SEWAH

CD BLOCK MANDAL/TALUKA NAME

PANIPAT

EDUCATIONAL ZONE/MANDAL/TALUKA NAME

PANIPAT

ASSEMBLY CONSTITUENCY

PANIPAT RURAL

MUNICIPALITY

Panipat

IS THIS SCHOOL APPROACHABLE BY ALL WEATHER ROAD	YES
IS THIS A SPECIAL SCHOOL FOR CWSN	NO
IS THIS A SHIFT SCHOOL	NO
IS THIS A RESIDENTIAL SCHOOL	NO
TYPE OF RESIDENTIAL SCHOOL	
IS THIS A RELIGIOUS MINORITY SCHOOL	NO
TYPE OF RELIGIOUS MINORITY SCHOOL	
NUMBER OF ACADEMIC INSPECTIONS DURING LAST ACADEMIC YEAR	1
NUMBER OF VISITS BY CRC COORDINATOR DURING LAST ACADEMIC YEAR	0
NUMBER OF VISITS BY BLOCK LEVEL OFFICER DURING LAST ACADEMIC YEAR	2

SCHOOL PARTICULARS FOR ELEMENTARY SCHOOLS ONLY H-503, PRINYAAG INTERNATIONALSCHOOL PANIPAT HARYANA

NUMBER OF INSTRUCTIONAL DAYS DURING LAST ACADEMIC YEAR	<small>Dated : 12/10/2020</small>	230
SCHOOL HOURS FOR CHILDREN PER DAY (CURRENT YEAR)		6
SCHOOL HOURS FOR TEACHERS PER DAY (CURRENT YEAR)		6
ARE PUPIL CUMULATIVE RECORDS BEING MAINTAINED?		YES
ARE PUPIL CUMULATIVE RECORDS SHARED WITH PARENTS?		YES
NUMBER OF STUDENTS PROVIDED IN SPECIAL TRAINING (CURRENT YEAR)		00
NUMBER OF STUDENTS ENROLLED IN SPECIAL TRAINING (PREVIOUS YEAR)		00
NUMBER OF STUDENTS COMPLETED SPECIAL TRAINING (PREVIOUS YEAR)		00
HAS SCHOOL MANAGEMENT COMMITTEE (SMC) BEEN CONSTITUTED?		YES
LANGUAGES TAUGHT AT PRIMARY STAGE: MENTION THE NAME OF LANGUAGE OPTIONAL		
IS ANGANWADI CENTRE IN OR ADJACENT TO SCHOOL? OPTIONAL		

NUMBER OF MEETINGS HELD BY SMC DURING LAST ACADEMIC YEAR 13
WHETHER SMC PREPARE THE SCHOOL DEVELOPMENT PLAN YES

WHETHER SEPARATE BANK ACCOUNT FOR SMC NO IF YES, PROVIDE THESE DETAILS

BANK NAME
ACCOUNT HOLDER'S NAME
BANK ACCOUNT NUMBER
IFSC CODE

WHEN WAS THE TEXTBOOK RECEIVED FOR CURRENT YEAR? NOT RECEIVED

WHETHER COMPLETE SET OF FREE TEXT BOOKS FOR TEACHERS LEARNING EQUIPMENT (TLE) RECEIVED? NO

WHETHER TLE RECEIVED FOR EACH GRADE? NO

WHETHER PLAY MATERIAL GAMES AND SPORTS MATERIAL AVAILABLE FOR EACH GRADE? YES

ARE THE MAJORITY OF PUPILS TAUGHT THROUGH THEIR MOTHER TONGUE AT PRIMARY STAGE? OPTIONAL

SCHOOL PARTICULARS FOR SECONDARY AND HIGHER SECONDARY SCHOOLS ONLY

NUMBER OF INSTRUCTIONAL DAYS DURING LAST ACADEMIC YEAR 214
41568--PRAYAAG INTERNATIONALSCHOOL PANIPAT HARYANA
Dated : 12/10/2020

SCHOOL HOURS FOR CHILDREN PER DAY (CURRENT YEAR) 6

SCHOOL HOURS FOR TEACHERS PER DAY (CURRENT YEAR) 6

ARE SCHOOL MANAGEMENT COMMITTEE (SMC) AND SCHOOL MANAGEMENT DEVELOPMENT COMMITTEE (SMDC) SAME? YES

IF NO, UPLOAD DETAILS OF SMDC [VIEW \(PdfHandler.aspx? FileName=smdc/531592.pdf\)](#)

PHYSICAL FACILITIES AND EQUIPMENTS

41568--PRAYAAG INTERNATIONALSCHOOL PANIPAT HARYANA

NUMBER OF CLASSROOMS BY CONDITION

Dated : 12/09/2020

PUCCA	PARTIALLY PUCCA	KUCHCHA	TENT
107	0	0	0
0	0	0	0
0	0	0	0

IS LAND AVAILABLE FOR EXPANSION OF SCHOOL ACTIVITIES?	YES
IS SEPARATE ROOM AVAILABLE FOR PRINCIPAL/HEAD TEACHER?	YES
IS SEPARATE ROOM AVAILABLE FOR VICE PRINCIPAL/ASSISTANT HEAD TEACHER?	YES
IS SEPARATE ROOM AVAILABLE FOR CRAFTS/CO CURRICULAR ACTIVITIES?	YES
IS STAFF QUARTERS AVAILABLE?	NO
IS HAND WASHING FACILITY AVAILABLE NEAR TOILET/URINALS ?	YES
IS ELECTRICITY CONNECTION AVAILABLE?	YES
IS AUDIO/VISUAL/PUBLIC ADDRESS SYSTEM AVAILABLE?	YES
IS LCD PROJECTOR AVAILABLE?	YES
NUMBER OF AVAILABLE PRINTERS	4
SPEED OF AVAILABLE PRINTERS	20-40 PPM
NUMBER OF PHOTOCOPIERS AVAILABLE	2
IS LEASE LINE AVAILABLE?	YES
SPEED OF LEASE LINE (IF AVAILABLE)	20
IS SCANNER AVAILABLE?	YES
IS RAIN WATER HARVESTING IMPLEMENTED?	YES

ENROLLMENT INFORMATION

41568--PRAYAAG INTERNATIONALSCHOOL PANIPAT HARYANA

Dated : 12/09/2020

CATEGORY WISE STUDENTS

CLASS	GENERAL	SC	ST	OBC
PRIMARY	502	0	0	0
MIDDLE	319	0	0	0
SECONDARY	165	0	0	0
SENIOR SECONDARY	51	0	0	0

MINORITY GROUP WISE STUDENTS

CLASS	MUSLIM	CHRISTIAN	SIKH	JAIN	OTHERS
PRIMARY	0	0	8	17	0
MIDDLE	0	0	4	4	0
SECONDARY	1	0	4	8	0
SENIOR SECONDARY	1	0	1	1	0

CHILDREN WITH SPECIAL NEEDS

CLASS	VISUAL IMPAIRMENT	SPEECH IMPAIRMENT	LOCOMOTIVE IMPAIRMENT	HEARING IMPAIRMENT	CEREBRAL PALSY	LEARNING DISABILITY	AUTISM	MULT DISAE
1	00	00						
2								
3								
4								
5								
6								
7								
8								
9								
10								
11								
12								

MID DAY MEAL INFORMATION (Only for Government and Aided Schools) **41568--PRAYAAG INTERNATIONALSCHOOL PANIPAT HARYANA**

STATUS OF KITCHEN SHED (If meal prepared in school)	Dated : 24/09/2020	SOURCE OF MDM (If meal not prepared in school)
--	---------------------------	---

SPORTS INFORMATION

41568--PRAYAAG INTERNATIONALSCHOOL PANIPAT HARYANA

Dated : 24/09/2020

AEROBICS ATHLETICS BASKETBALL CHESS FOOTBALL HANDBALL JUDO KHO KHO SWIMMING TABLE TENNIS VOLLEY YO
 ARCHERY BADMINTON BOXING CRICKET GYMNASTICS HOCKEY KABADDI SHOOTING TAEKWONDO TENNIS

DOES THE SCHOOL HAVE A MANDATORY SPORTS/GAMES PERIOD FROM CLASS 1 TO 12 EVERY DAY ? YES

FACILITY INFORMATION

41568--PRAYAAG INTERNATIONALSCHOOL PANIPAT HARYANA

Dated : 24/09/2020

FACILITY PROVIDED TO PRIMARY STUDENTS

FACILITY	GENERAL	SC	ST	OBC	MUSLIM MINORITY
FREE TEXT BOOKS					
FREE UNIFORMS					
STATE DEFINED INCENTIVES					

FACILITY PROVIDED TO UPPER PRIMARY STUDENTS

FACILITY	GENERAL	SC	ST	OBC	MUSLIM MINORITY
FREE TEXT BOOKS					
FREE UNIFORMS					
STATE DEFINED INCENTIVES					

FACILITY PROVIDED TO CWSN STUDENTS

FACILITY	ELEMENTARY	SECONDARY	HIGHER SECONDARY
BRAILL BOOKS/KITS			
LOW VISION KIT			
BRACES			
CRUTCHES			
WHEEL CHAIRS			
CALIPERS			
TRI CYCLES			